

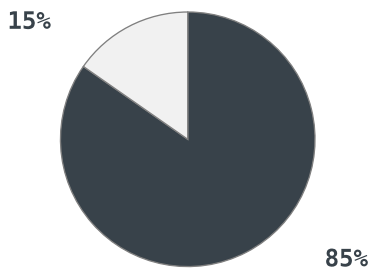
Suburb Profile Report  
Palmview QLD 4553

Prepared on 26 April 2023

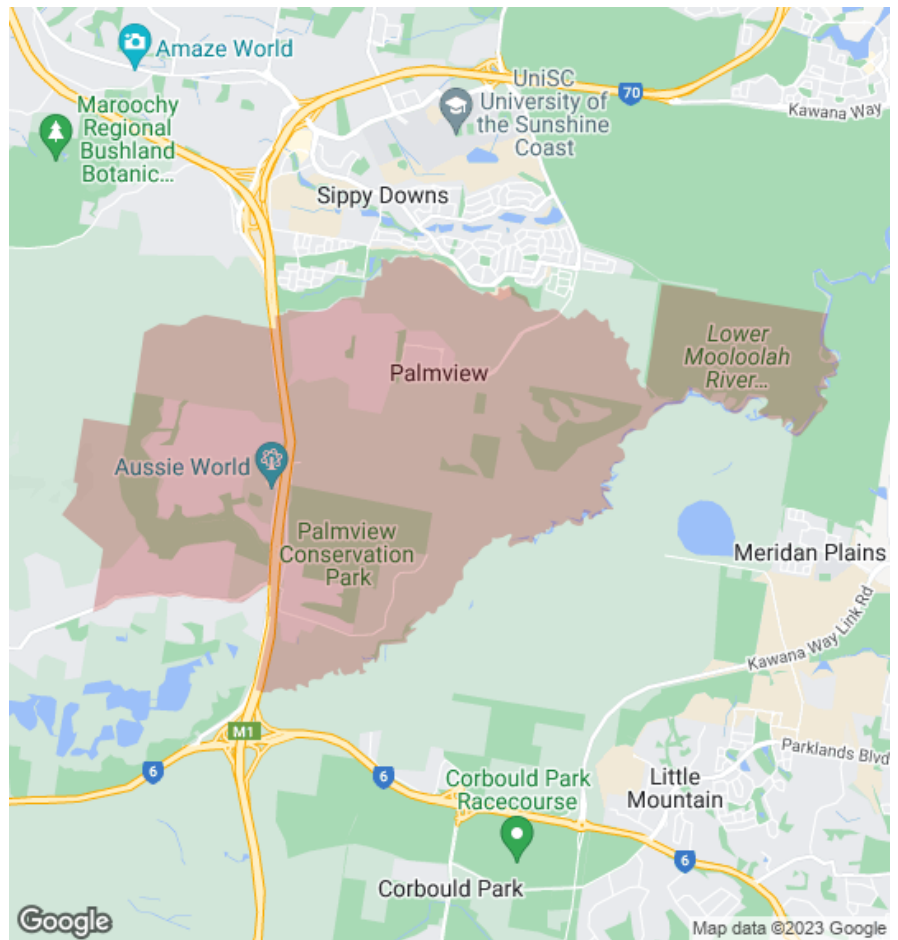


CoreLogic®





■ Owner Occupiers □ Renters



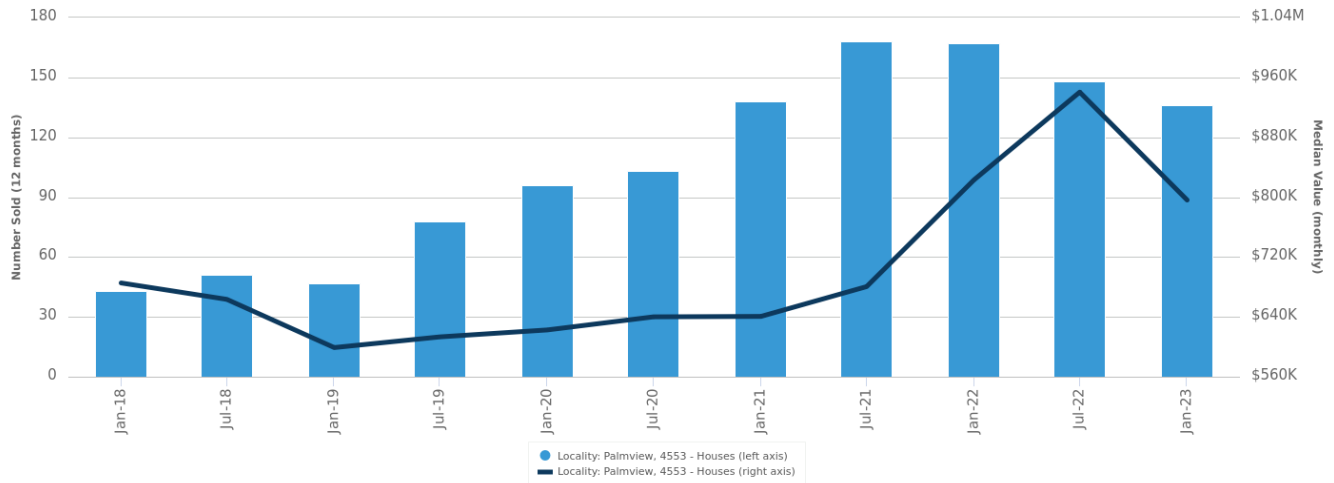
The size of Palmview is approximately 18.6 square kilometres. It has 5 parks covering nearly 8.4% of total area. The population of Palmview in 2011 was 573 people. By 2016 the population was 880 showing a population growth of 53.6% in the area during that time. The predominant age group in Palmview is 40-49 years. Households in Palmview are primarily couples with children and are likely to be repaying \$2400 - \$2999 per month on mortgage repayments. In general, people in Palmview work in a trades occupation. In 2011, 78.6% of the homes in Palmview were owner-occupied compared with 83.9% in 2016. Currently the median sales price of houses in the area is \$782,500.

	Total dwellings	Total new listings*	Median Value	Total number currently listed
	1,198	153	\$765,659	48
	19	1	-	1

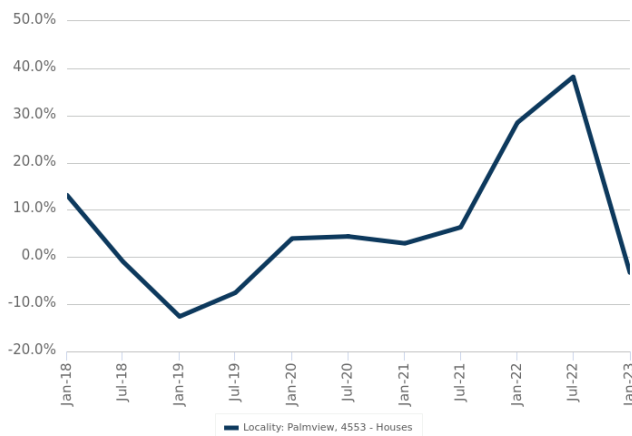
\*Total number of unique properties listed for sale over the past 12 months.

## Houses: For Sale

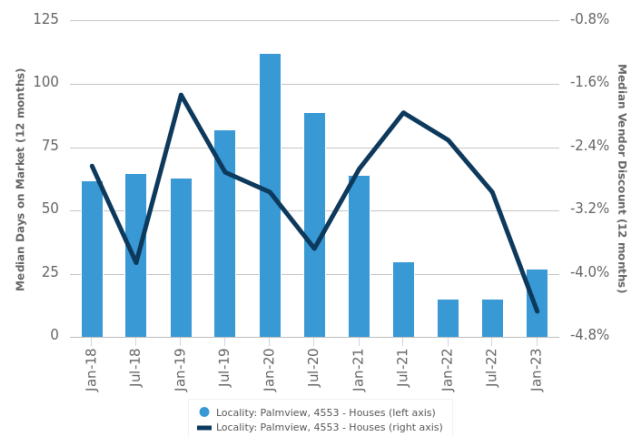
Number Sold vs. Median Value (monthly)



Change in Median Value



Median Days on Market vs. Median Vendor Discount



\$\$\$

Upper Quartile Price\*

\$975,000

The 75th percentile sale price of sales over the past 12 months within the suburb.

\$\$

Median Price\*

\$782,500

The middle sale price of all transactions recorded over the past 12 months within the suburb. Note that sale prices lower than \$10,000 and higher than \$80,000,000 are excluded from the analysis.

\$

Lower Quartile Price\*

\$707,500

The 25th percentile sale price of sales over the past 12 months within the suburb.

\*Statistics are calculated over a rolling 12 month period

# Houses: Market Activity Snapshot

## On The Market

0

2  
BEDROOMS

## Recently Sold

0

There are no 2 bedroom Houses on the market in this suburb There are no recently sold 2 bedroom Houses in this suburb

8

3  
BEDROOMS

20



**13 Cane Place Palmview QLD 4553**

Listed on 17 Apr 2023  
Not Disclosed

2  
 2  
 200m<sup>2</sup>



**72 Flintwood Crescent Palmview QLD 4553**

Sold on 21 Mar 2023  
Not Disclosed

2  
 2  
 375m<sup>2</sup>



**11 Pioneer Way Palmview QLD 4553**

Listed on 13 Apr 2023  
Offers from \$749k

2  
 2  
 434m<sup>2</sup>



**14 Caper Street Palmview QLD 4553**

Sold on 07 Mar 2023  
\$690,000

2  
 2  
 300m<sup>2</sup>

29

4  
BEDROOMS

49



**3 Bliss Drive Palmview QLD 4553**

Listed on 24 Apr 2023  
Offers Over \$699,000

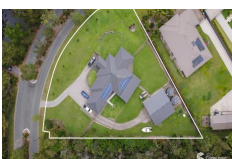
2  
 2  
 311m<sup>2</sup>



**24 Shay Street Palmview QLD 4553**

Sold on 21 Apr 2023  
Not Disclosed

1  
 2  
 300m<sup>2</sup>



**4 Palmview Forest Drive Palmview QLD 4553**

Listed on 21 Apr 2023  
Over \$1,700,000

5  
 2  
 3,314m<sup>2</sup>



**53 Village Green Boulevard Palmview**

Sold on 14 Apr 2023  
\$765,000\*

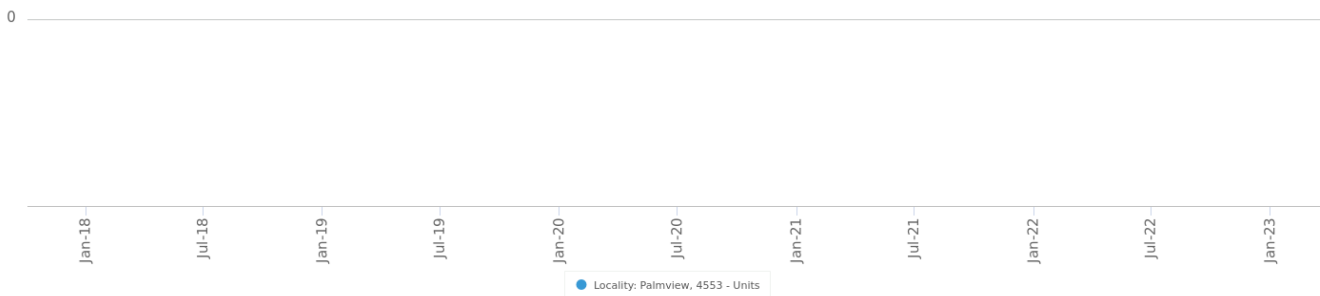
2  
 2  
 336m<sup>2</sup>

= number of houses currently On the Market or Sold within the last 6 months

\*Agent advised

## Units: For Sale

Number Sold vs. Median Value (monthly)



## Units: Market Activity Snapshot

### On The Market



There are no 1 bedroom Units on the market in this suburb

There are no recently sold 1 bedroom Units in this suburb



There are no 2 bedroom Units on the market in this suburb

There are no recently sold 2 bedroom Units in this suburb



There are no 3 bedroom Units on the market in this suburb

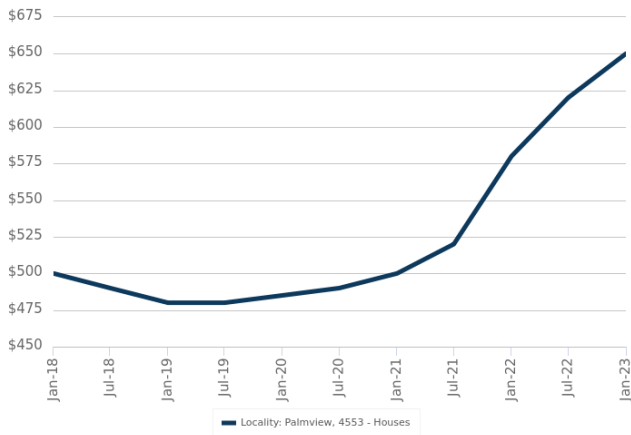
There are no recently sold 3 bedroom Units in this suburb



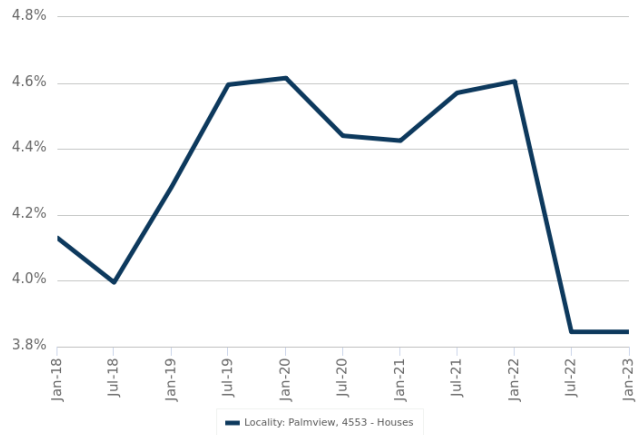
= number of units currently On the Market or Sold within the last 6 months

## Houses: For Rent

Median Asking Rent (12 months)



Indicative Gross Rental Yield (12 months)



## Houses: Rental Activity Snapshot

For Rent

0 2 BEDROOMS

There are no 2 bedroom Houses for rent in this suburb

12 3 BEDROOMS



**5 Achurch Street Palmview QLD 4553**

Listed on 24 Apr 2023  
\$2,730/M

1  
 2  
 250m<sup>2</sup>



**5 Dann Walk Palmview QLD 4553**

Listed on 24 Apr 2023  
\$600/W

2  
 2  
 188m<sup>2</sup>

23 4 BEDROOMS



**15 Charm Street Palmview QLD 4553**

Listed on 24 Apr 2023  
\$700/W

2  
 2  
 313m<sup>2</sup>



**16 Driver Street Palmview QLD 4553**

Listed on 21 Apr 2023  
\$780/W

2  
 2  
 250m<sup>2</sup>

= number of houses observed as On the Market for Rent within the last month

## Units: Rental Activity Snapshot

For Rent



0



1  
BEDROOMS

There are no 1 bedroom Units for rent in this suburb



0



2  
BEDROOMS

There are no 2 bedroom Units for rent in this suburb



1



3  
BEDROOMS



**23 Blythe Street Palmview  
QLD 4553**

Listed on 31 Mar 2023  
\$650/W



2



2



250m<sup>2</sup>



= number of units observed as On the Market for Rent within the last month



## DISCLAIMER

### Copyright

This publication reproduces materials and content owned or licenced by CoreLogic and may include data, statistics, estimates, indices, photographs, maps, tools, calculators (including their outputs), commentary, reports and other information (CoreLogic Data).

### CoreLogic Standard Disclaimer

The CoreLogic Data provided in this publication is of a general nature and should not be construed as specific advice or relied upon in lieu of appropriate professional advice.

While CoreLogic uses commercially reasonable efforts to ensure the CoreLogic Data is current, CoreLogic does not warrant the accuracy, currency or completeness of the CoreLogic Data and to the full extent permitted by law excludes liability for any loss or damage howsoever arising (including through negligence) in connection with the CoreLogic Data.

This publication contains data and statistics provided by the Australian Bureau of Statistics, available at <http://www.abs.gov.au/> and reproduced under Creative Commons Attribution 2.5 <http://creativecommons.org/licenses/by/2.5/au/legalcode>.

### Mapping Data

A map showing an area or boundaries of a property is indicative only and may not be complete or accurate.

### State and Territory Data

Based on or contains data provided by the State of Queensland (Department of Resources) 2023. In consideration of the State permitting use of this data you acknowledge and agree that the State gives no warranty in relation to the data (including accuracy, reliability, completeness, currency or suitability) and accepts no liability (including without limitation, liability in negligence) for any loss, damage or costs (including consequential damage) relating to any use of the data. Data must not be used for direct marketing or be used in breach of the privacy laws; more information at [www.propertydatacodeofconduct.com.au](http://www.propertydatacodeofconduct.com.au)

If you have any questions or concerns about the information in this report, please contact our customer care team.

Within Australia: **1300 734 318**  
Outside Australia: **(+61) 7 3114 9999**  
Email us: [customercare@corelogic.com.au](mailto:customercare@corelogic.com.au)